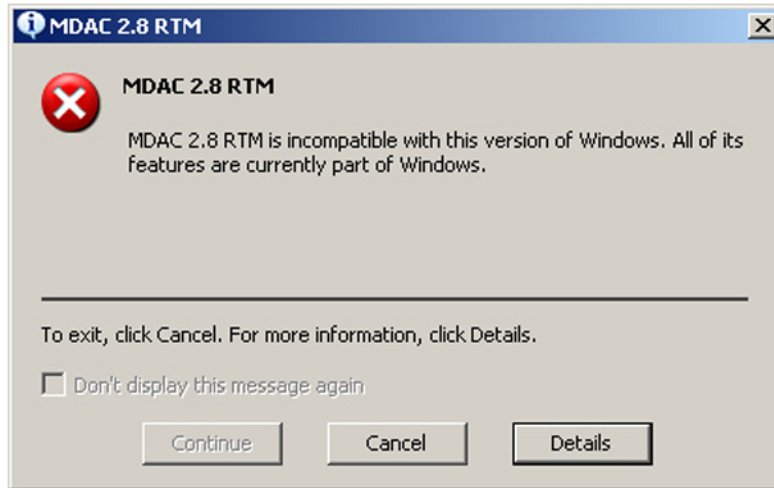


Troubleshooting Guide: MDAC 2.8 RTM

Some people may encounter the following error when installing InteriCAD T3 Pro,



MDAC 2.7 is needed to complete the installation of InteriCAD T3 Pro, here are the steps needed to complete the installation.

- Right Click on the CD Drive with your InteriCAD disk in and select Explore
- Navigate to the **"System"** folder
- Double click on **mdac_typ27.exe**
- Run the installation.