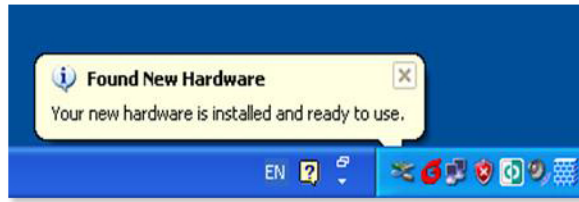
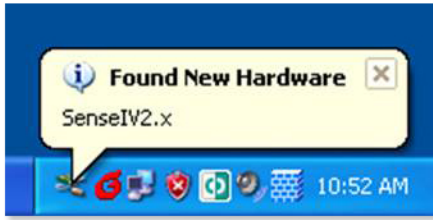
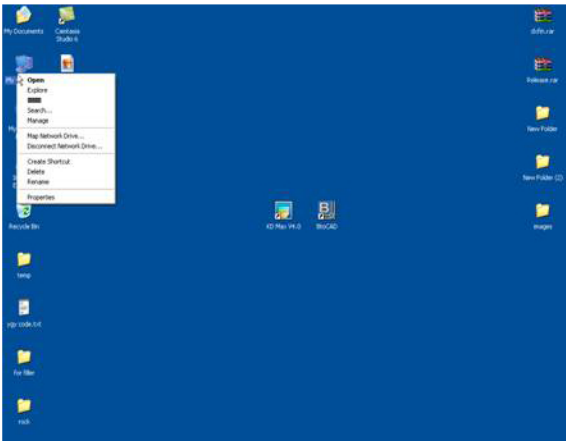


## Troubleshooting Guide: How to check if the key is installed

Before installing the USB key driver, please make sure that the USB key is not inserted to the computer. Only after finishing the installation, should the key be inserted. Once you have inserted the keylock you will see the notification in task bar as seen in the picture below.



The second way to find out if the USB key is correctly installed is to right click "My computer" and select properties function.



In system properties dialogue, please go to Hardware page and click Device Manager.



If you can see "Senselocks SenseIV v2.x" in Smart card readers, the USB key has been installed correctly.

