

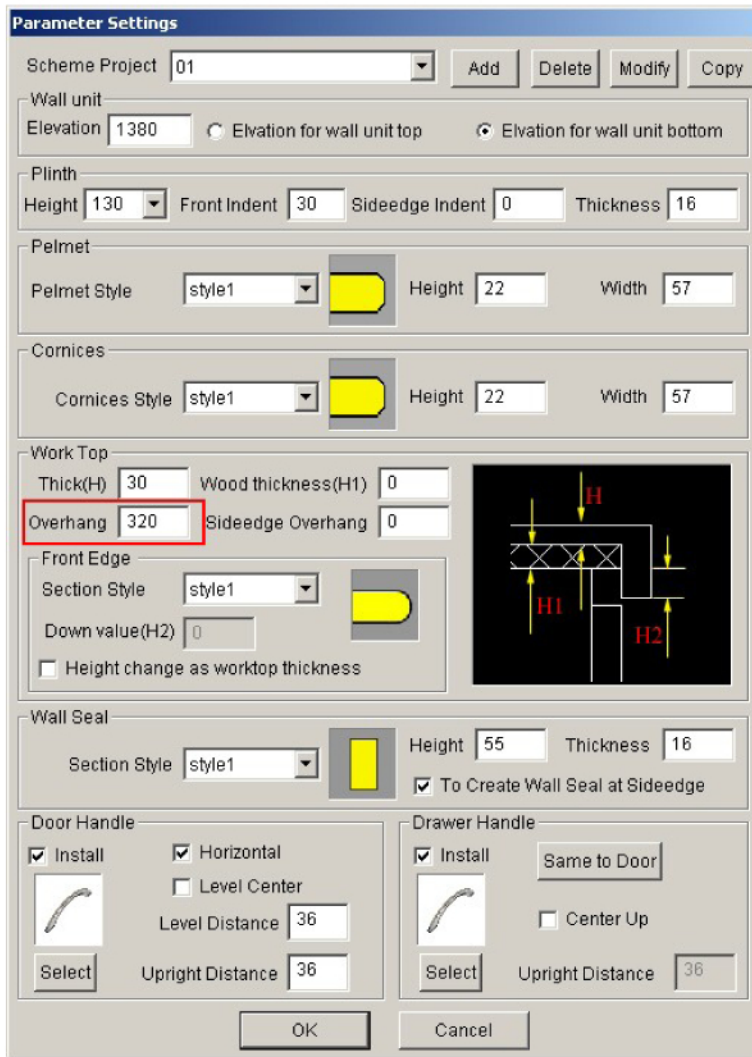
## Troubleshooting Guide: *Change the depth of a worktop*

### Change the depth of worktop:

In KDmax, changing the depth of worktop quick and easy.

Users just need to set the overhang of worktop in the parameter setting.

For example, the default worktop depth is 600mm, and we want to modify it to be 900mm. We would then edit the overhang to be 320mm.



When we use the worktop auto install function, the depth of the worktop will become 900mm.

