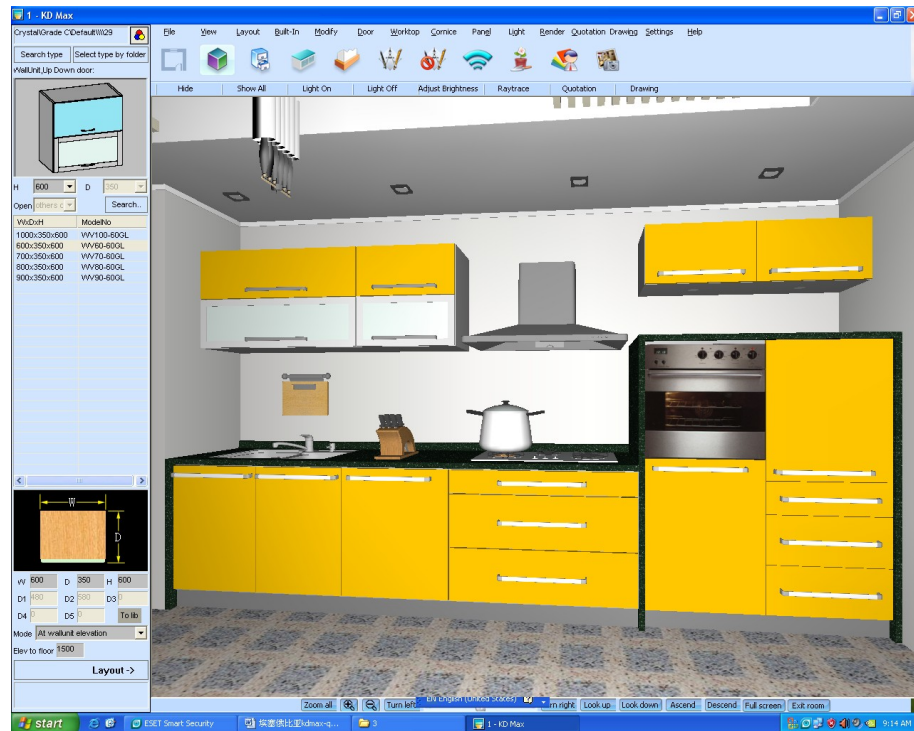


Step1. Input prices for cabinets, doors, worktops and so on in KDmax into database.

See: [How to set prices in KDmax](#)

Step2. Finish the design in 3D



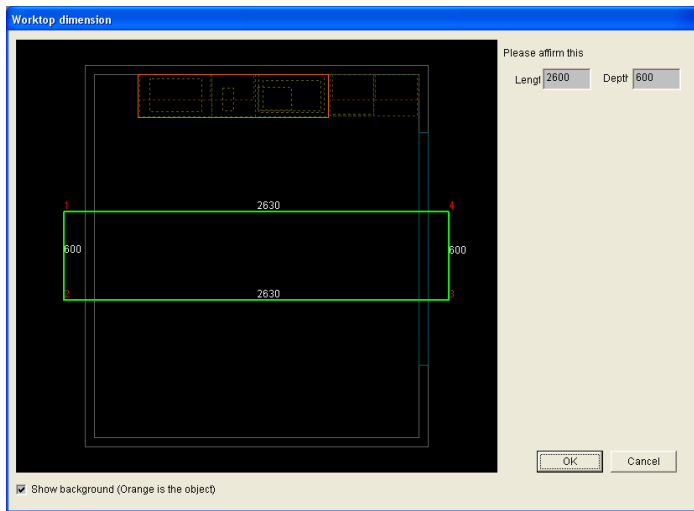
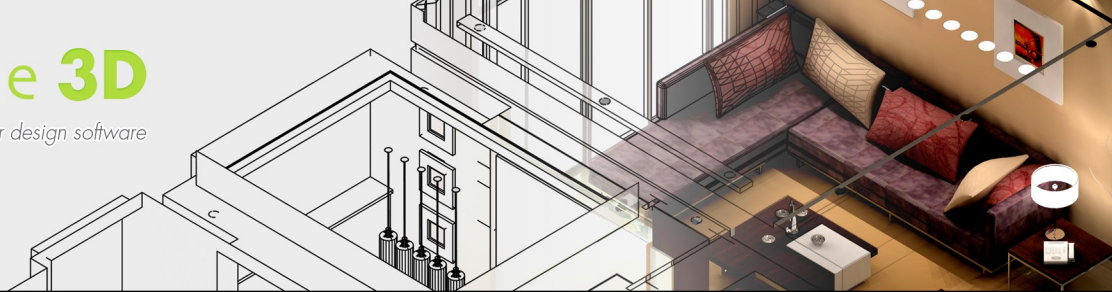
Step3. Add non-model accessories and appliances

Run *quotation* → *append accessory*

This function is used when there are some products (such as drawer runners, hinges and so on) should be charged, but there are no real models of them in the 3D scenes.

Step4. Run “Quotation → Auto Quotation”

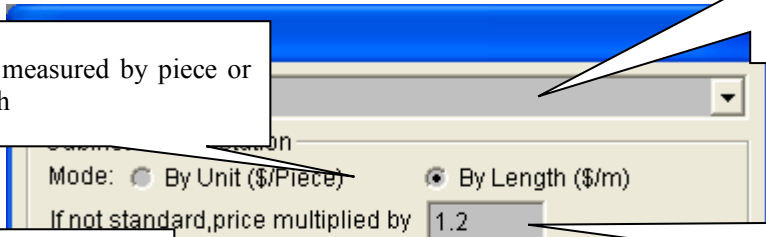
If there are worktops in your design, a dialog will popup to ask whether the dimension is correct. If more worktops, the dialog will appear more times



And then, another dialog will popup:

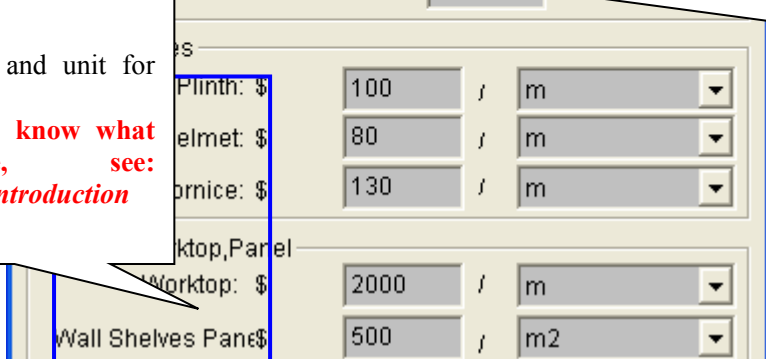
Choose your currency unit here. **If you want your own one here, see: [how to add a currency unit in quotation](#)**

Price is measured by piece or by length



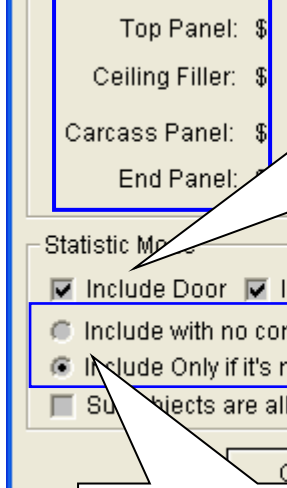
If you change the size of the cabinet, the price of this cabinet will be multiplied by....

Input the price and unit for these products
If you want to know what they are, see: [product names introduction](#)

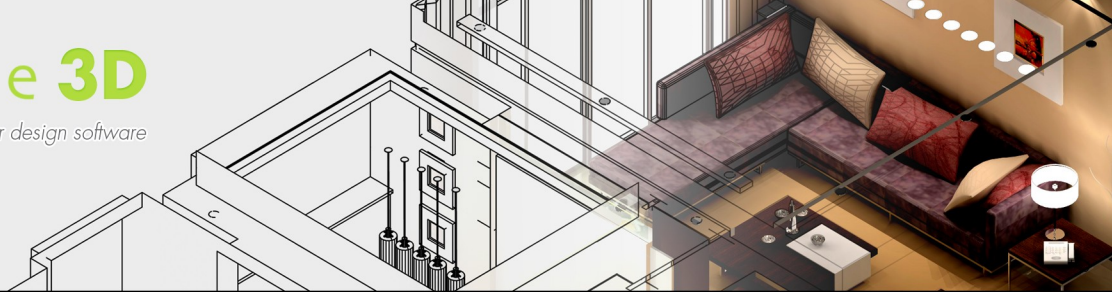


If you tick **Include door**, the doors of a cabinet will be charged additionally besides the cabinet. The same are **Include drawer** and **Include handle**

If **Include with no condition** is selected, all models will be list in the quotation form, no matter whether quotation property of the model is **Yes** or **No**. If the other option is selected, only models whose quotation property is **Yes** will be list in the quotation form.
What is the quotation property? See: [how to change the property for quotation.](#)



To control whether the product done in Step3 are list following the cabinet or in the accessory column



Press OK to get the quotation list.