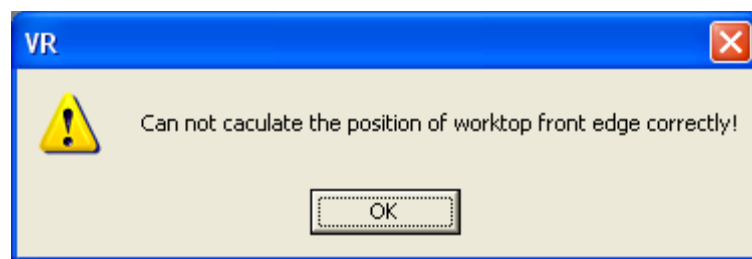
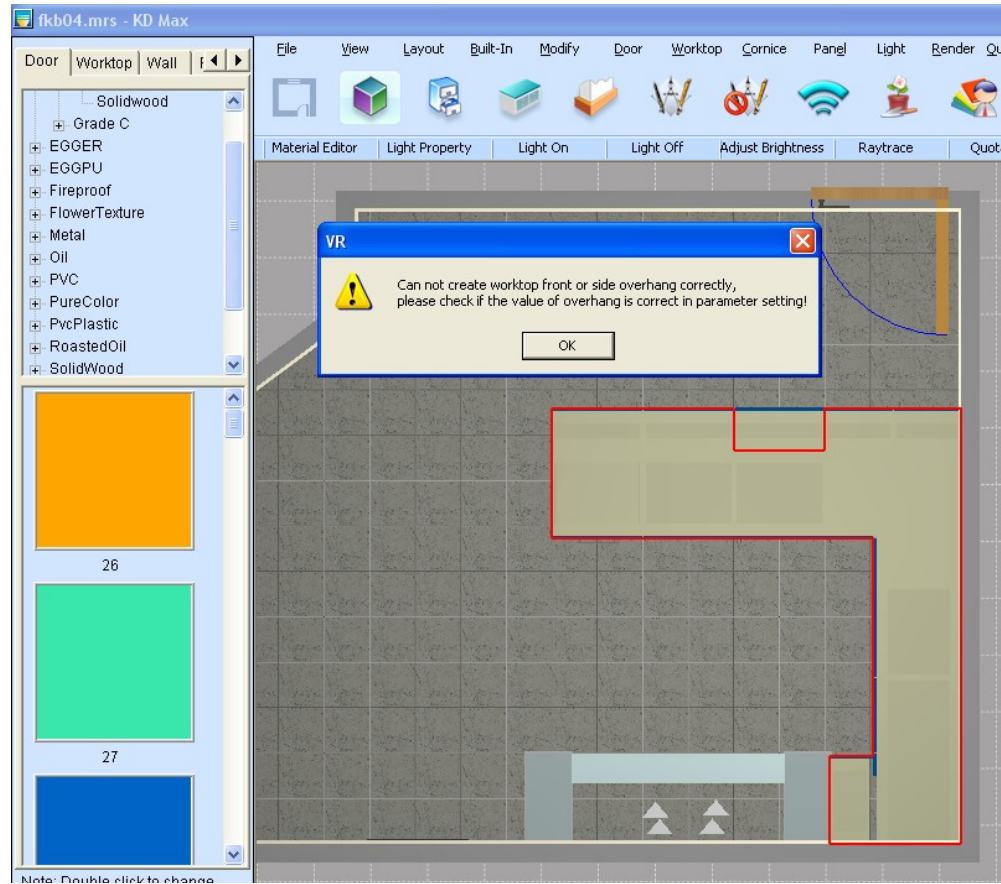
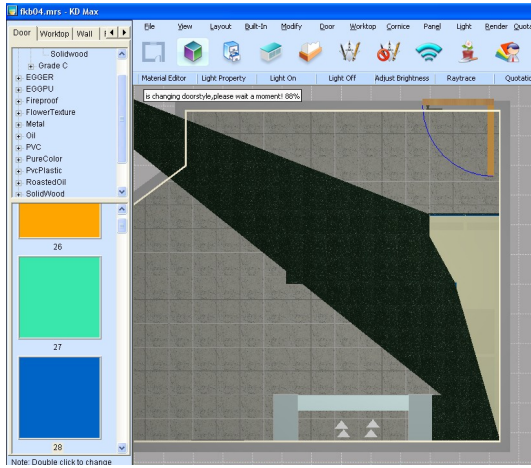
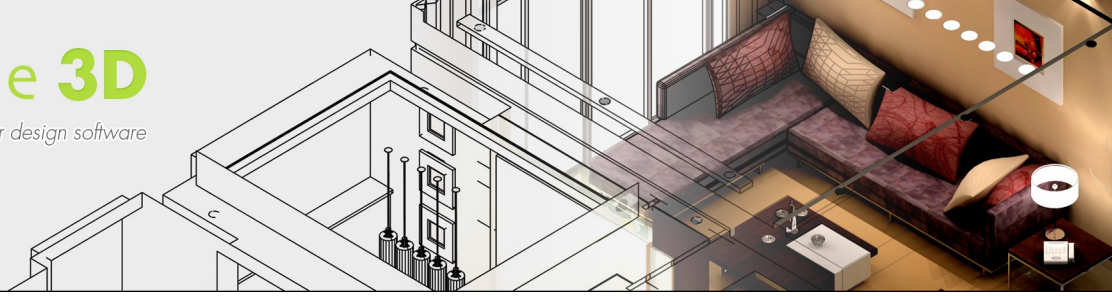


How to deal with a corrupted worktop

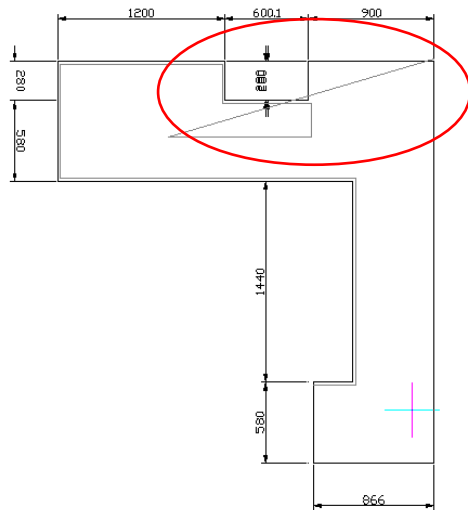
1. When Run “Create Worktop”, prompts show as below:



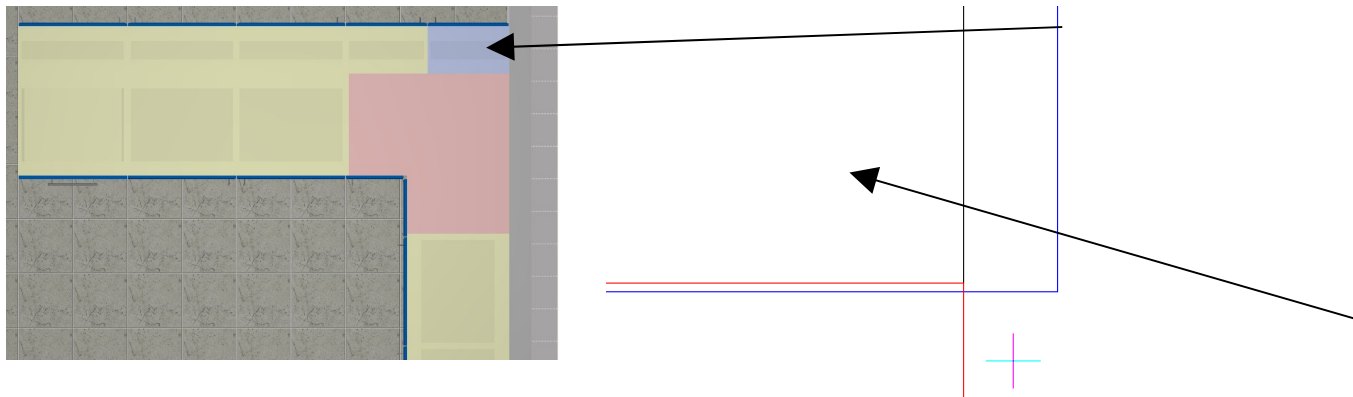
And after click “OK”, corrupted worktops are generated as below:

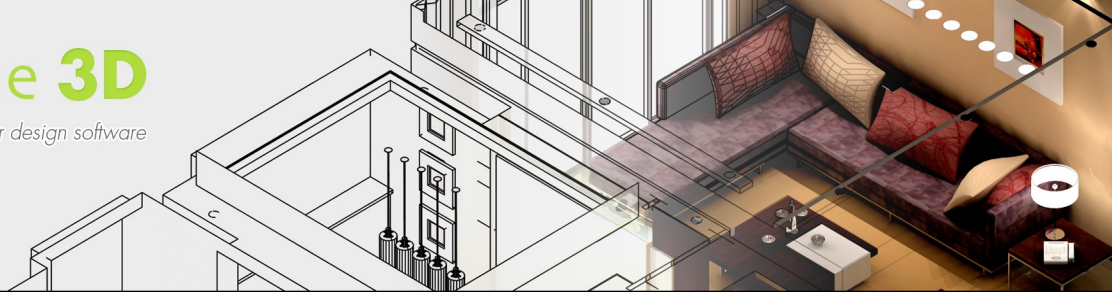


Diagnose: Run “Drawing >> Output Drawing >> Worktop”. From the worktop drawing, shown as below, we deduced the problem was mainly due to the area in red circle.



After careful check, we found that the 2 cabinets slightly interfere with each other, and even part of the blue one was out of the room. This small error led to the problem.

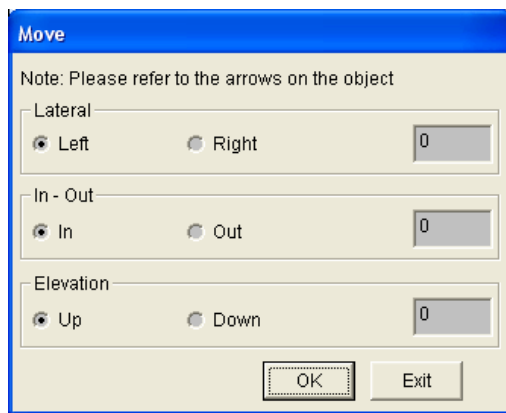




Solution: Re-locate the thin cabinets again by “Modify >> Edge Fix” function, we can now get a correct worktop.



We assume the cabinet in red was positioned there by using Move function repeatedly in order to place the unit in the correct position. This way is not a recommended way.



We recommend users positioning cabinets back-to-back or side-to-back by “Modify >> Edge Fix” function instead of moving or rotating the units.