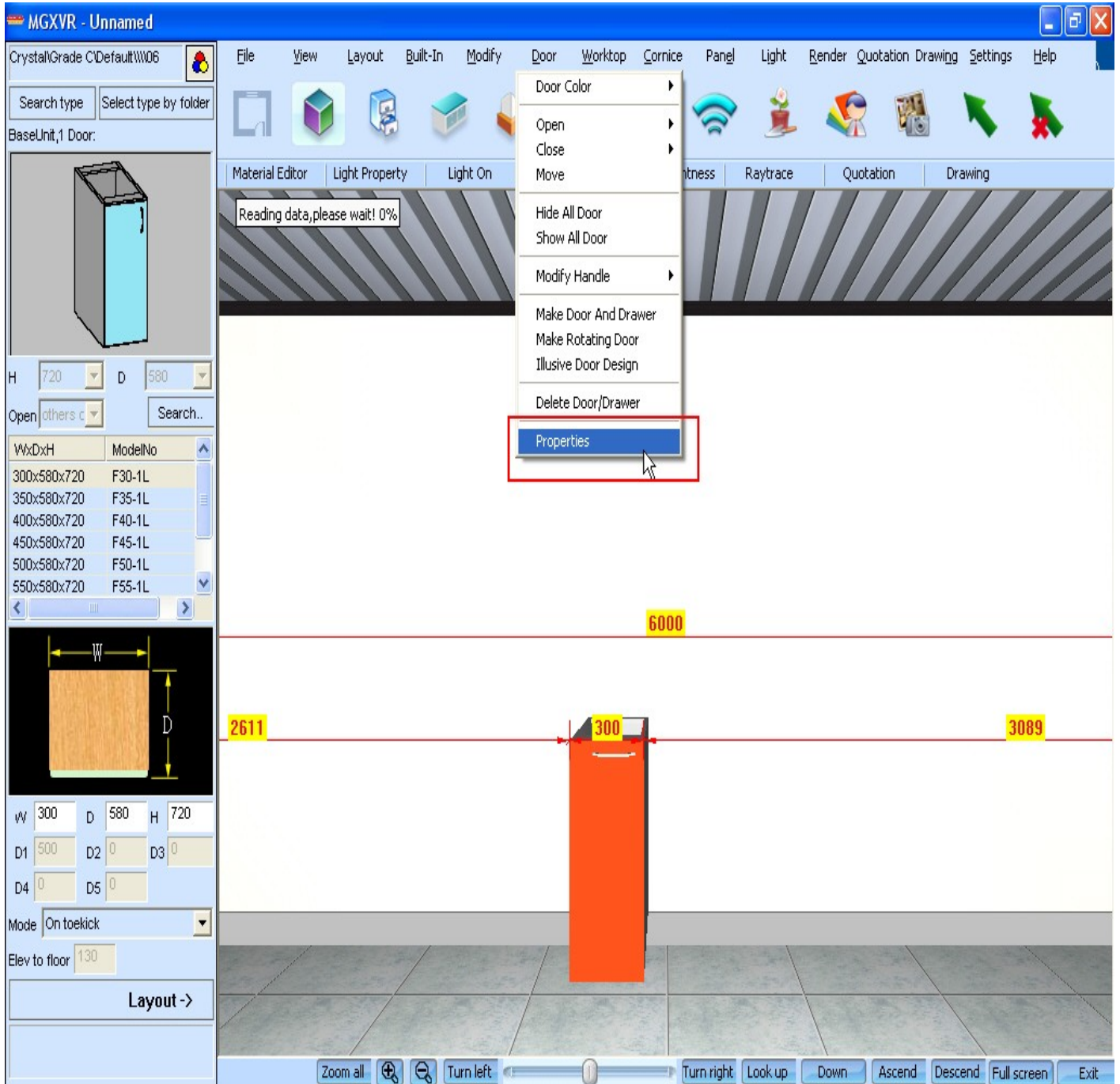


## How to change the direction that the door opens

Change door open direction:

Go to menu “Door Properties”, and left click on the cabinet door.



The screenshot shows the MGXVR software interface. The 'Door' menu is open, and the 'Properties' option is highlighted with a red box. The interface includes a menu bar, a toolbar, a left sidebar with a product list, and a main 3D view area showing a cabinet door with dimensions (W: 300, D: 580, H: 720) and a 'Layout ->' button.

**MGXVR - Unnamed**

CrystalGrade C:\Default\W06

Search type Select type by folder

BaseUnit,1 Door:

H 720 D 580

Open others.c Search..

WxDxH	ModelNo
300x580x720	F30-1L
350x580x720	F35-1L
400x580x720	F40-1L
450x580x720	F45-1L
500x580x720	F50-1L
550x580x720	F55-1L

W 300 D 580 H 720

D1 500 D2 0 D3 0

D4 0 D5 0

Mode On toekick

Elev to floor 130

Layout ->

File View Layout Built-In Modify Door Worktop Cornice Panel Light Render Quotation Drawing Settings Help

Door Color

Open

Close

Move

Hide All Door

Show All Door

Modify Handle

Make Door And Drawer

Make Rotating Door

Illusive Door Design

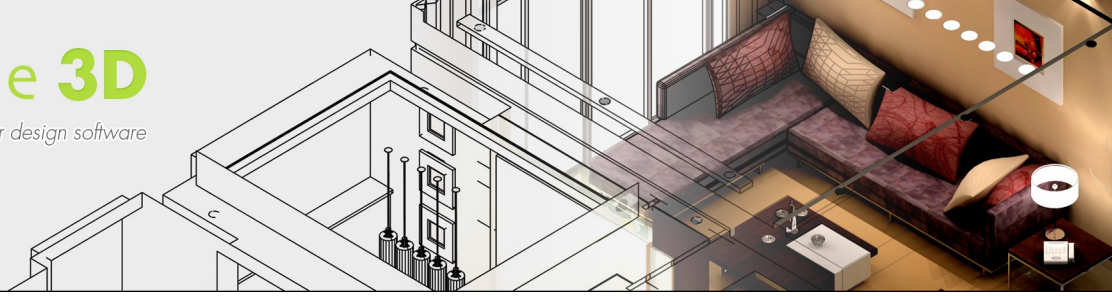
Delete Door/Drawer

Properties

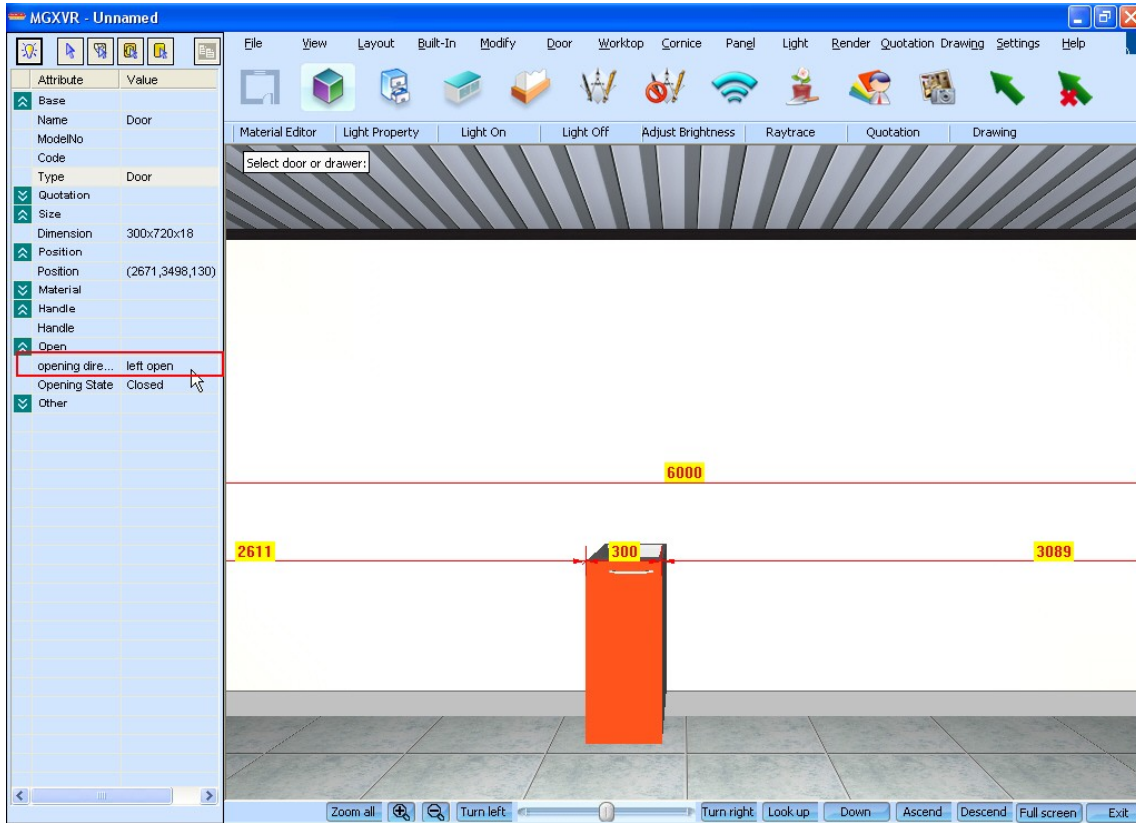
6000

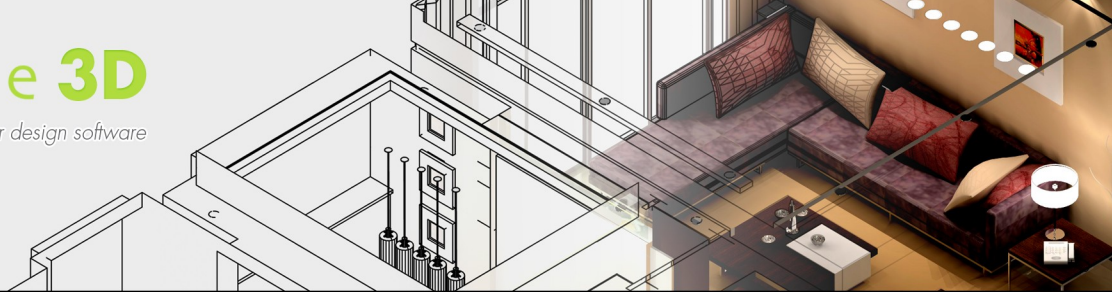
2611 300 3089

Zoom all Turn left Turn right Look up Down Ascend Descend Full screen Exit

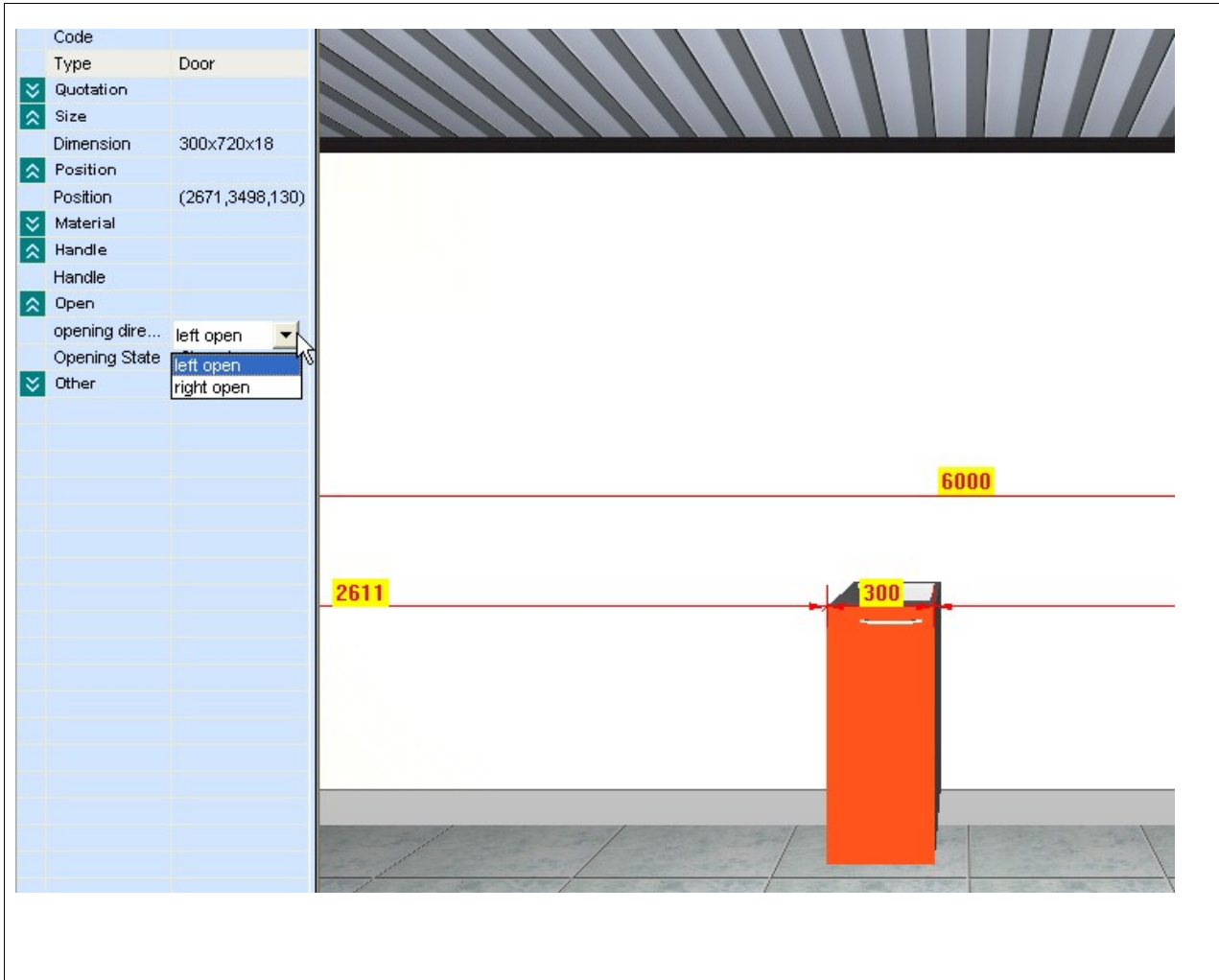


The properties window will appear on the right, find the function called “Opening Direction”





Select the "left open" or "right open", you can now change the door open direction.



The screenshot displays the software's interface for configuring a door. On the left, a properties panel lists various attributes:

Code	Door
Type	Door
Quotation	
Size	
Dimension	300x720x18
Position	
Position	(2671,3498,130)
Material	
Handle	
Handle	
Open	
opening dire...	left open
Opening State	left open
Other	right open

The 3D view on the right shows a red door in a room. Red dimension lines indicate the following measurements:

- A horizontal line at the top of the door frame is labeled **6000**.
- A horizontal line across the door's width is labeled **300**.
- A vertical line on the left side of the door frame is labeled **2611**.