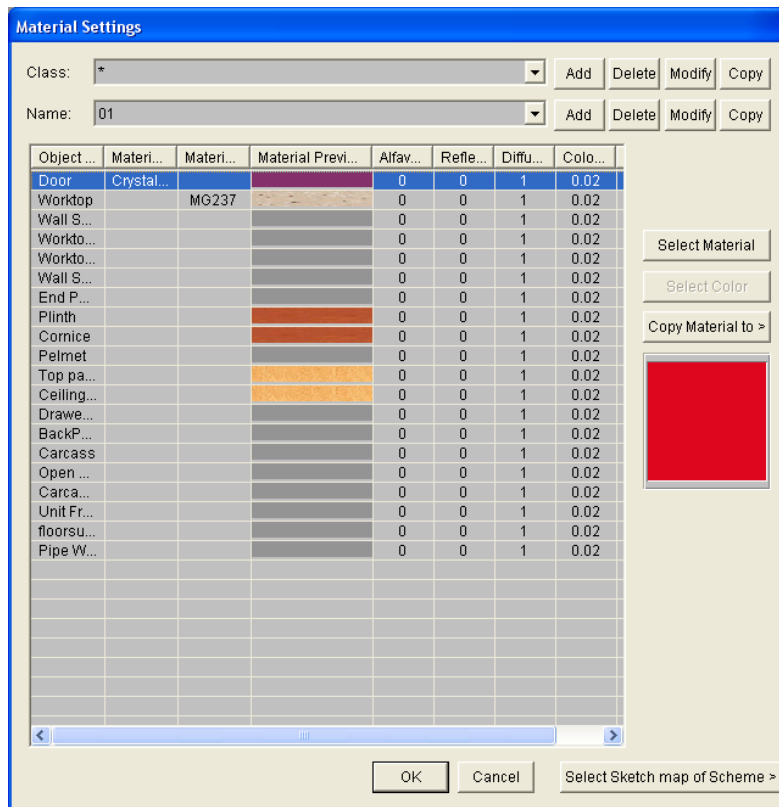
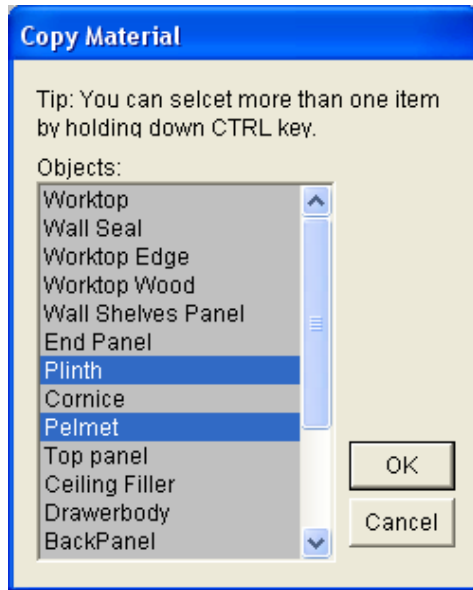


## How to make the colour of the plinth and pelmet the same as the door

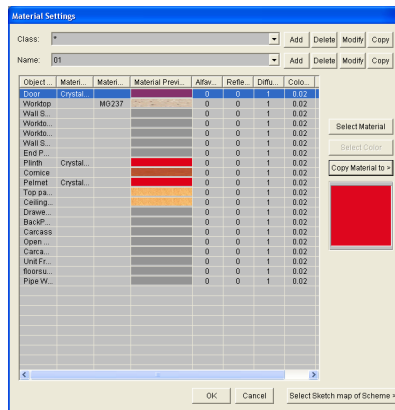
1. Menu “setting” → “material setting”  
If item “Door” doesn’t show the material you need, click “Select Material” and choose one for it.
2. Select “Door” item, → “Copy Material to”



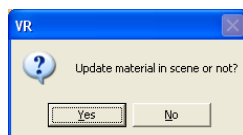
2. Select “Plinth” and “Pelmet” → “OK”



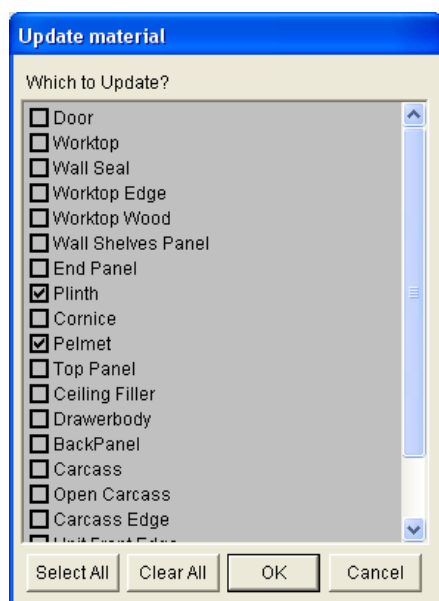
3. You can see “Plinth” and “Pelmet” are the same material as “Door”, → “OK”



4. Click “Yes” to update material



5. Tick “Plinth” and “Pelmet” → “OK”



You will achieve what you want.