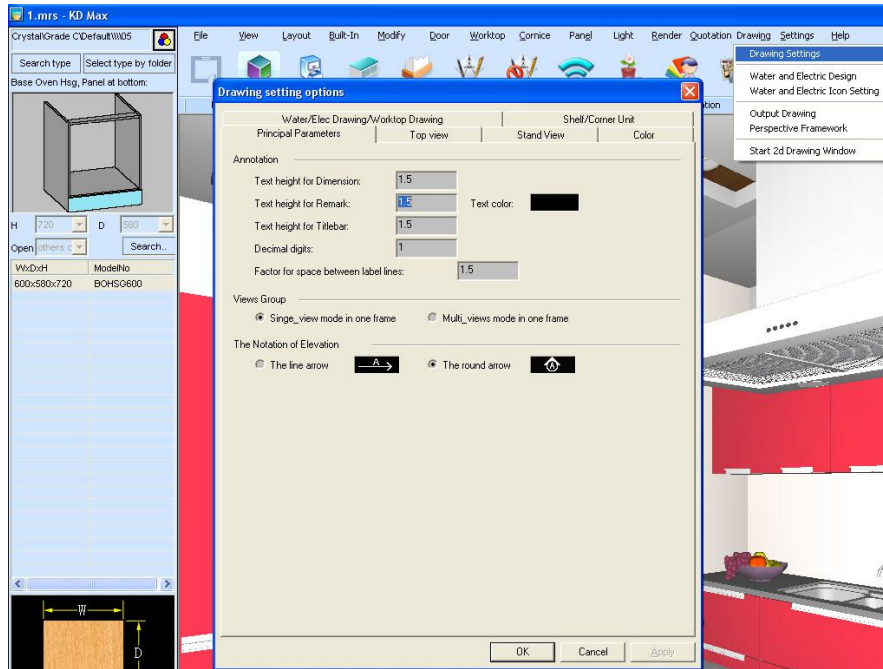
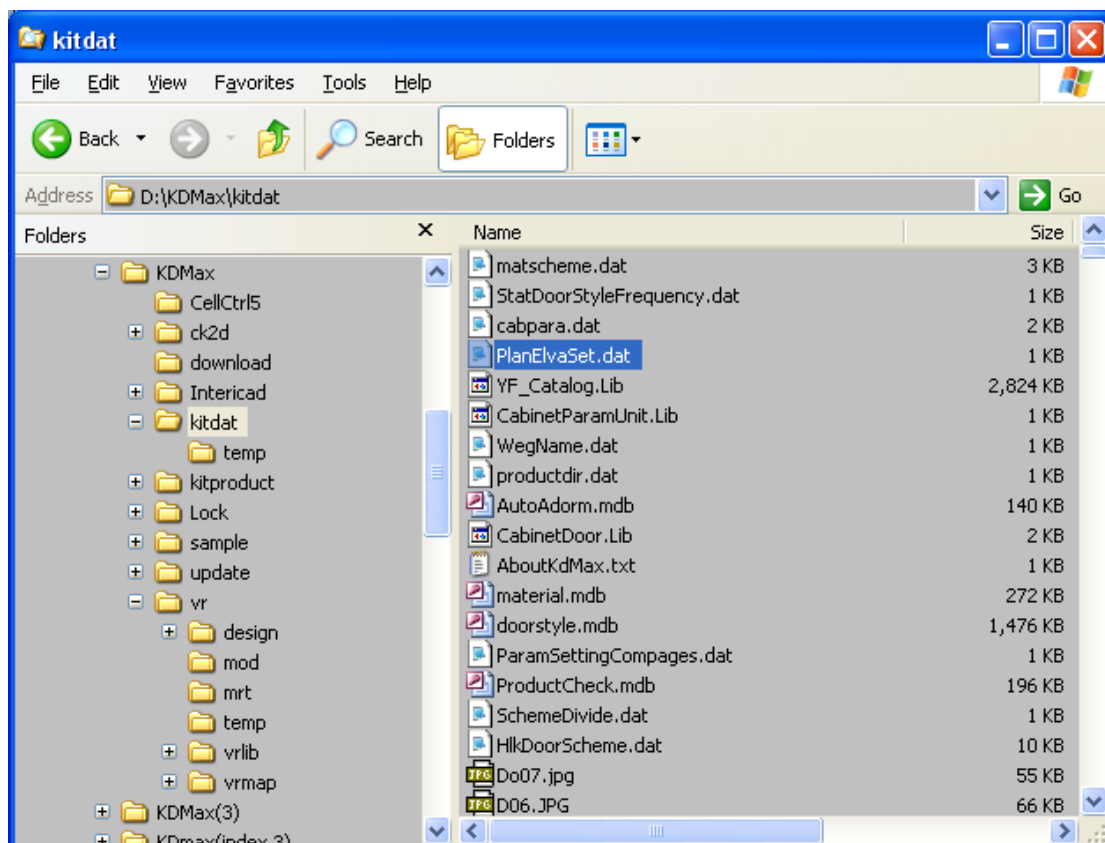


The following tells you how to backup your own setting in KDmax. When you install a new KDmax, you could restore the settings.

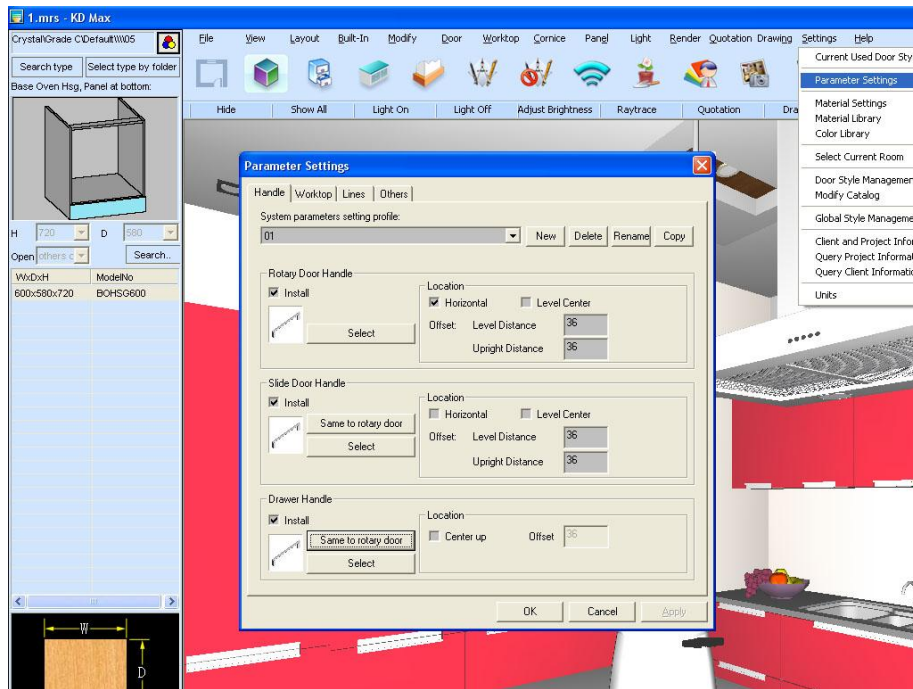
## 1. Working drawing setting



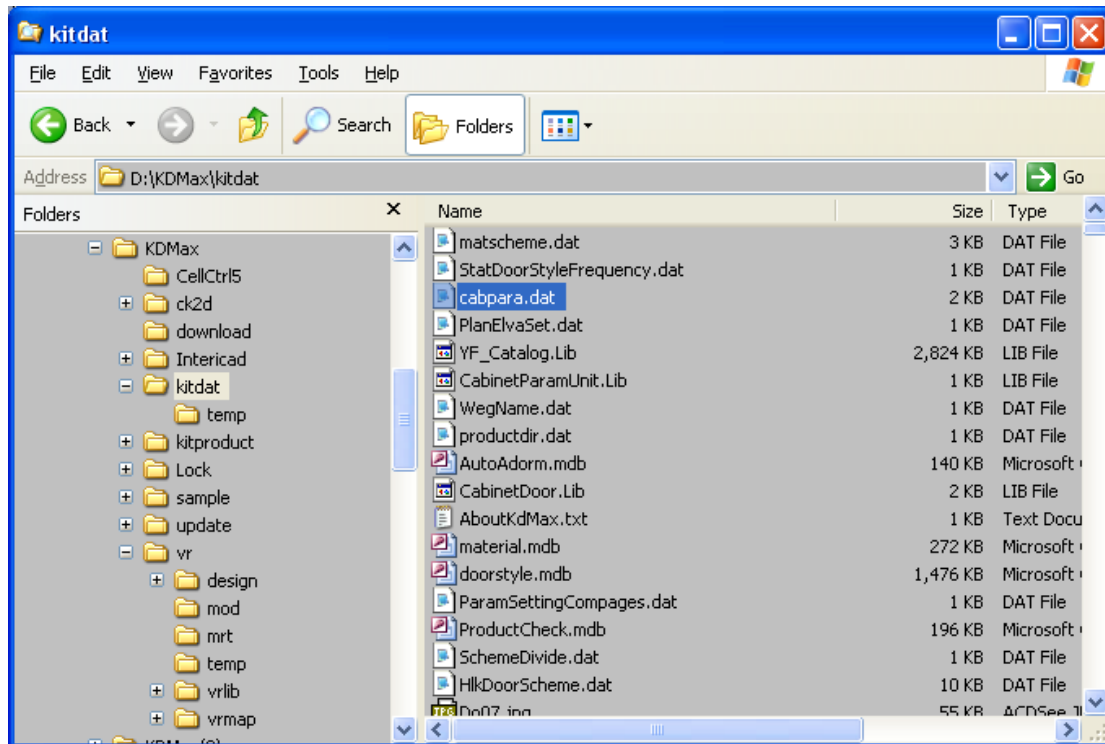
Settings in the dialog are saved in the file “**.\KDmax\kitdat\PlanElvaSet.dat**”. You only need to backup this file, and if you want to restore you settings to a new installation, just copy it to the new installation folder.



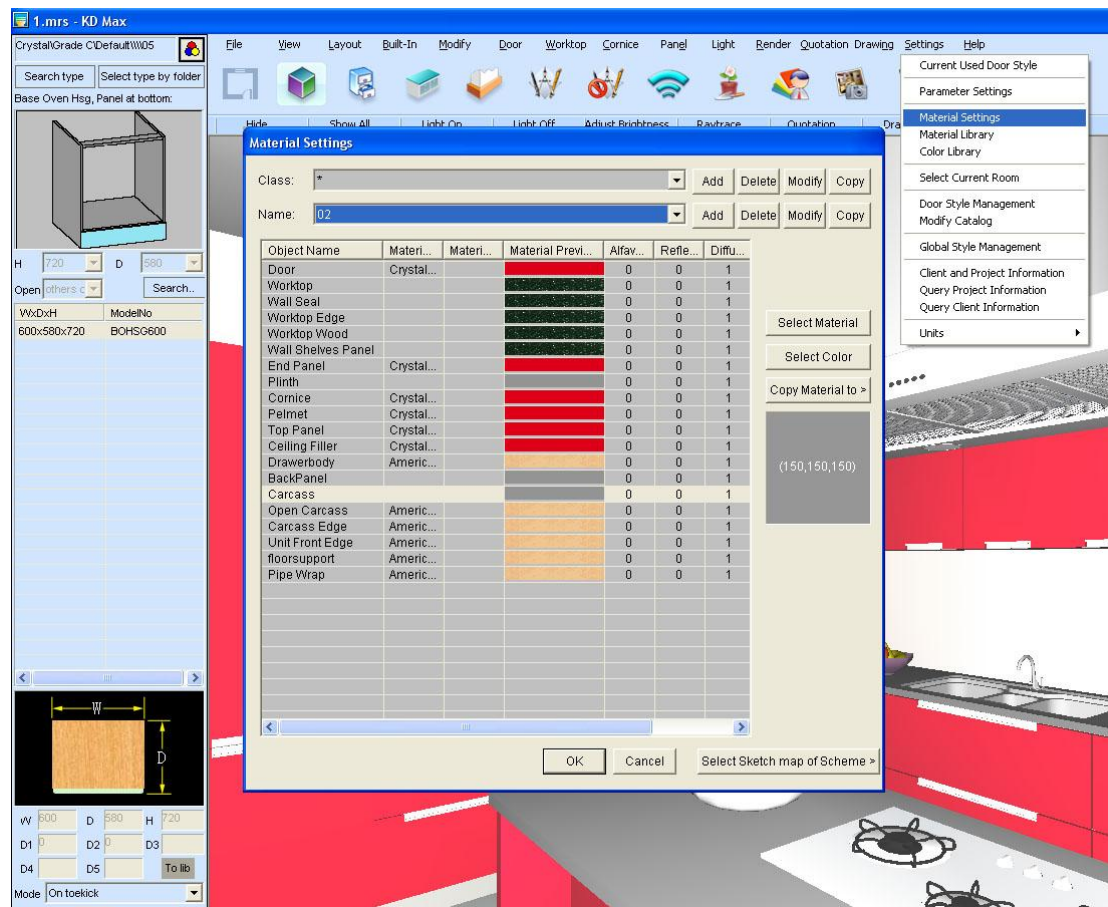
## 2. Parameters Setting



The same method as “Working drawing setting”, but this time the file is “.\KDmax\kitdat\cabpara.dat”.

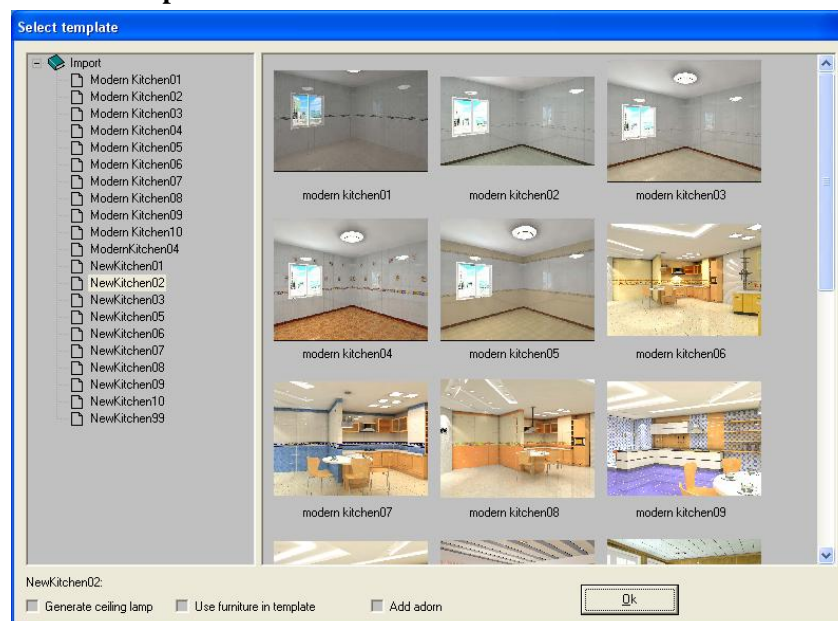


### 3. Material Setting



The same method as the above 2 , but this time the file is “.\KDmax\kitdat\ matscheme.dat”.

### 4. Room template



If you have created your own room template, they are saved in the folder “.\KDmax\vr\mrt”.

One template is saved into 3 files, the files title of which are the same as the template name. Of the 3 files, one is set format, one is jpg format and the other one is mrt format. You should backup the

3 files for one template.

