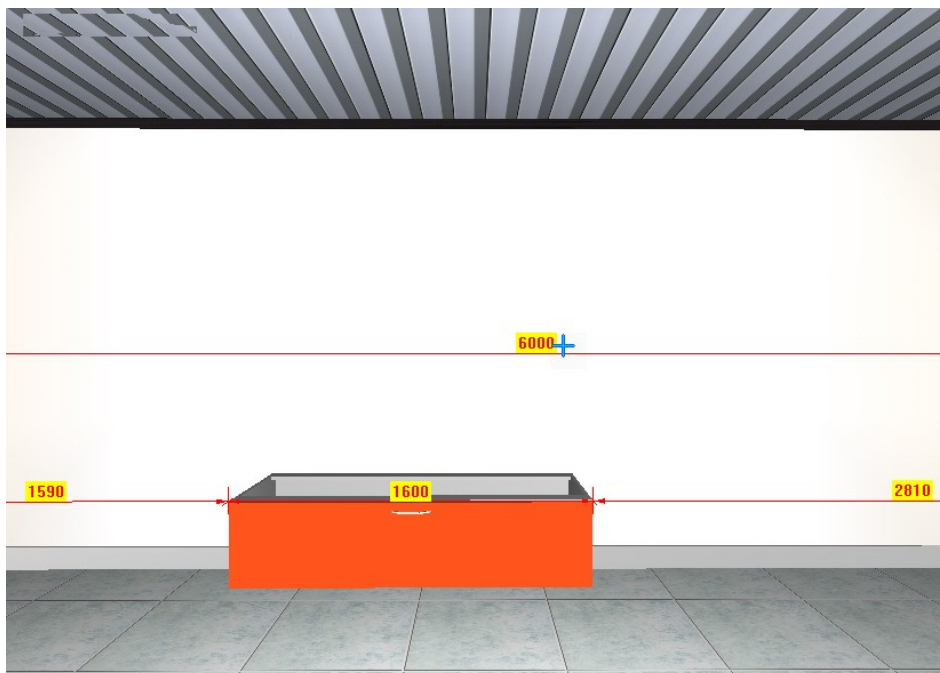
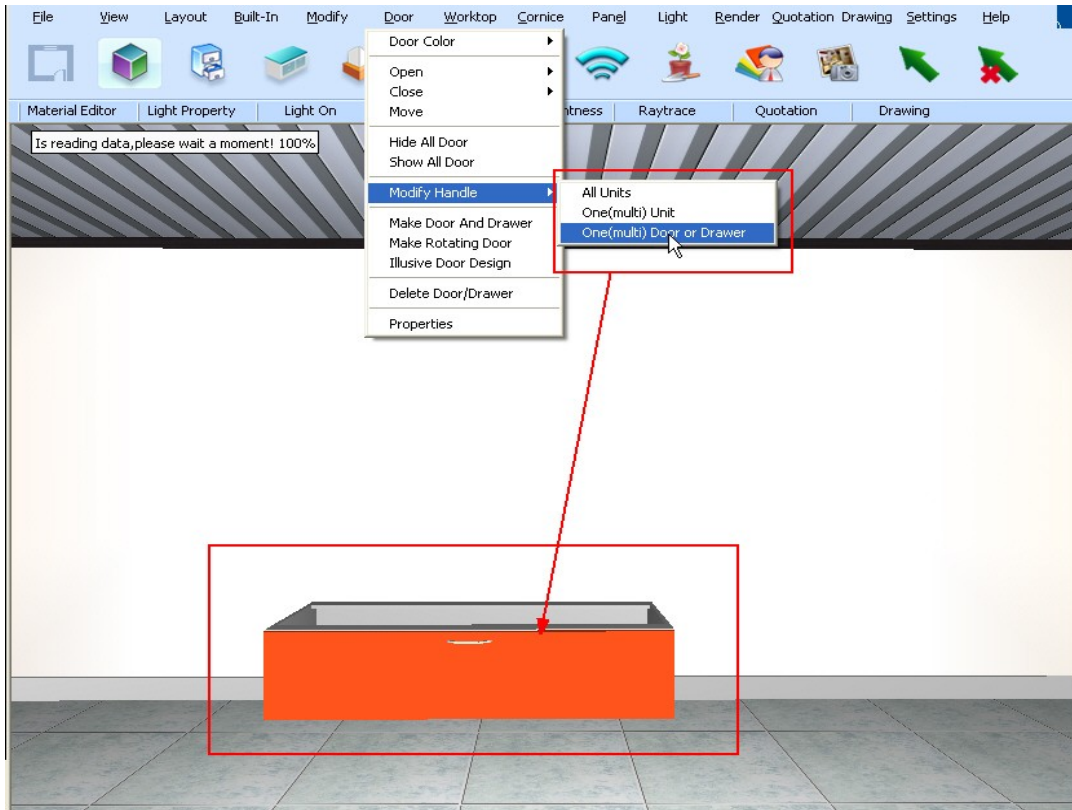
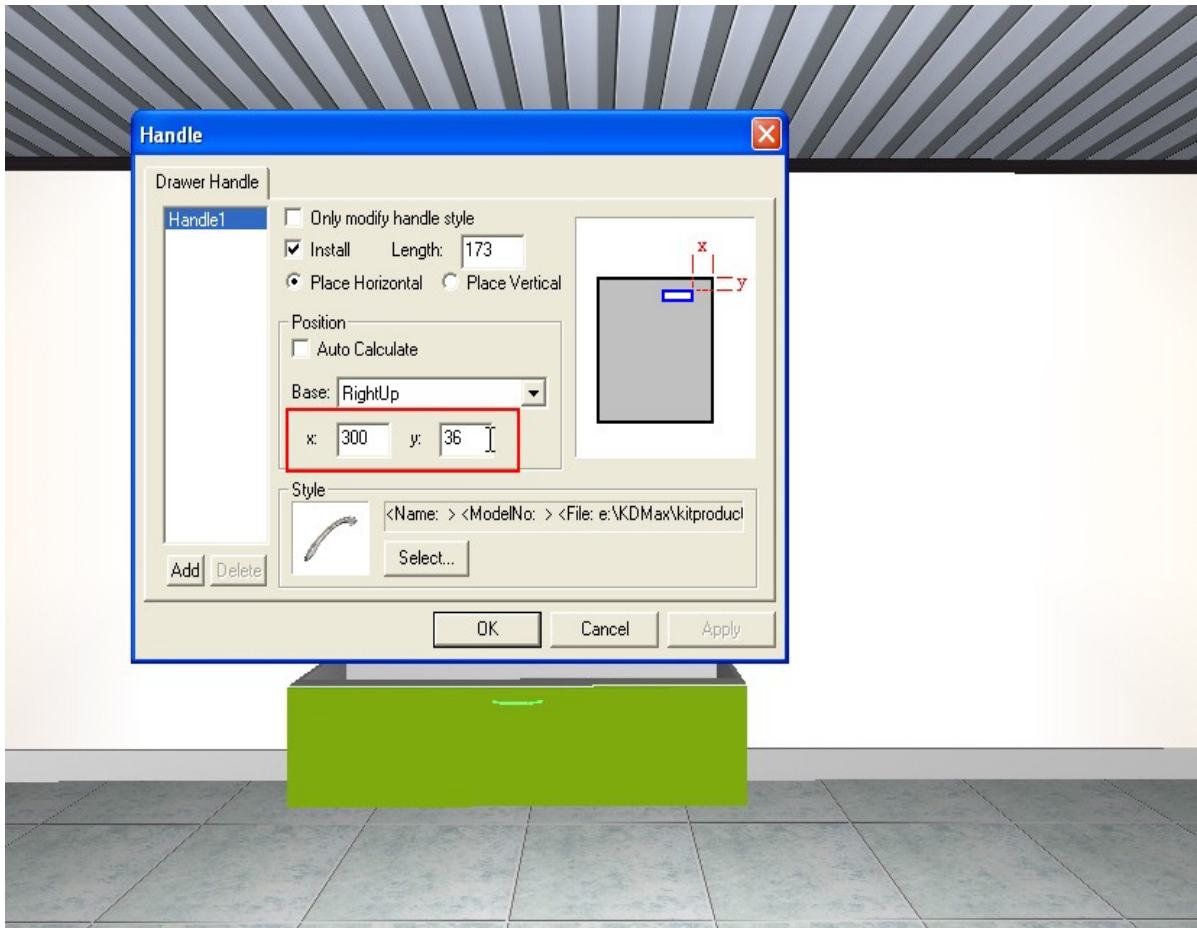
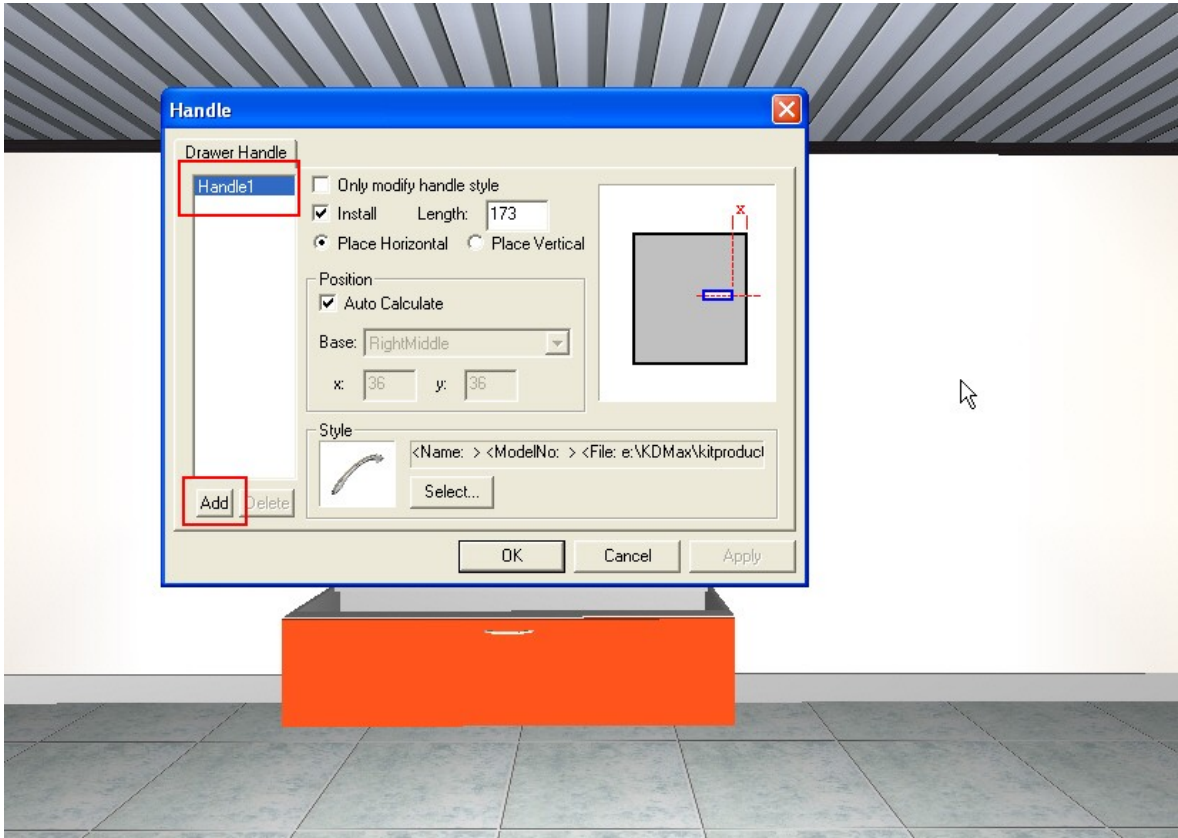


## How to add more than one handle to a door in KDMAX

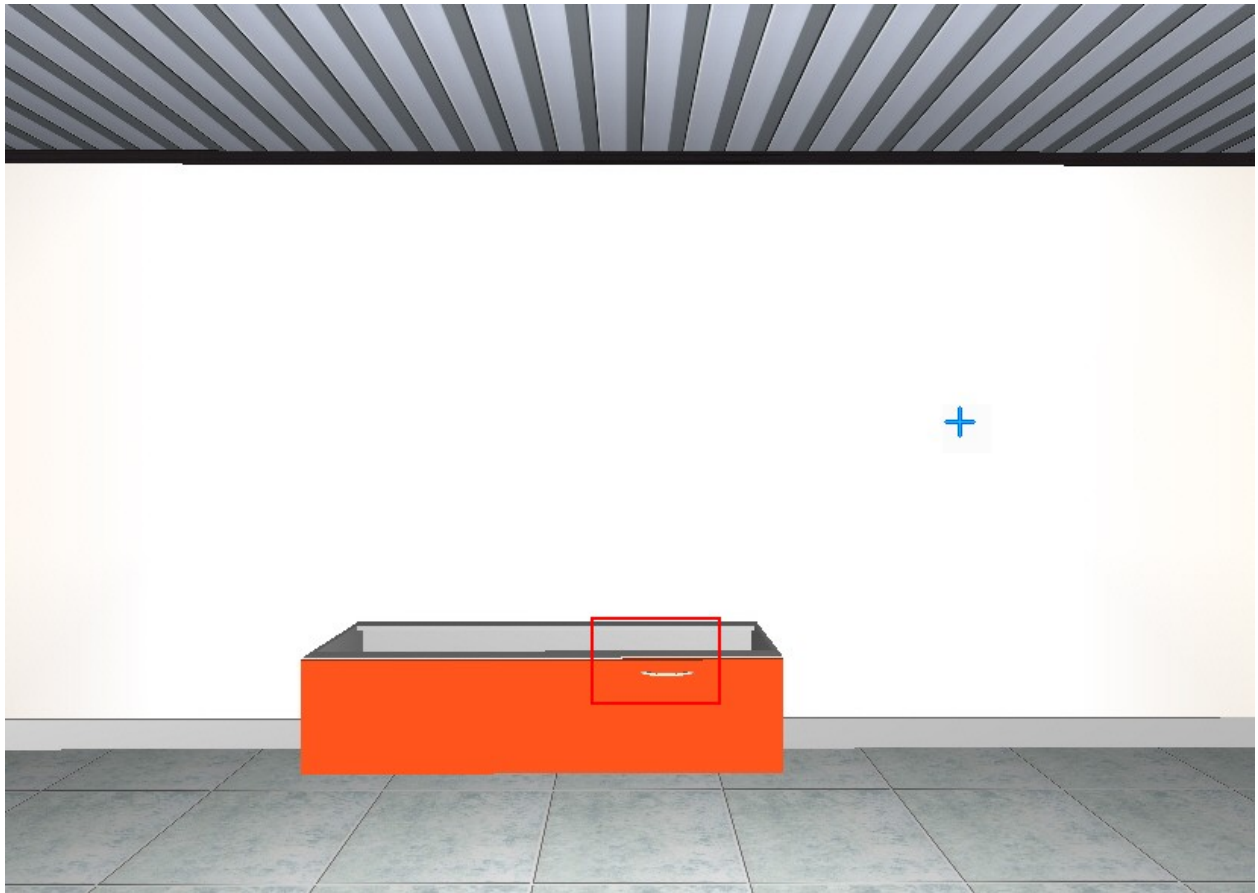
In Kd Max, we can add more than one handle to a door. This function is very useful for large drawers.

First, place a drawer unit and go to Door-->Modify Handle function. Select the door on which you want to add handles.

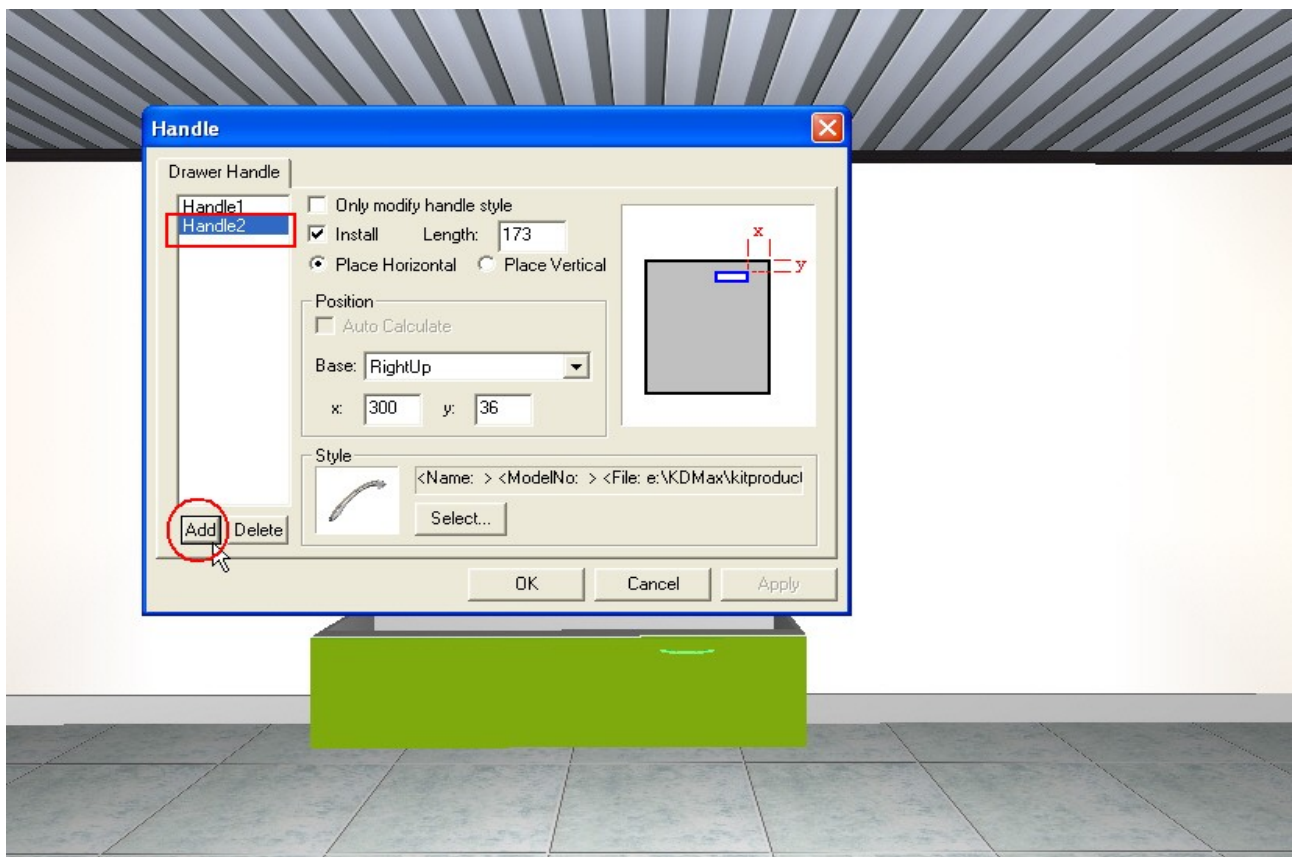




Next, the handle modify window will open. Set the handle to the right of the door.



Next, use modify handle again and left click "Add" button.



Now, we can see there is "Handle 2" in the white area on the left. Now set the second handle on the left of the door. There are now two handles.

Using the same method, we could add more handles.

