

Instruction for interiCAD Network version

1. What is Network version?

InteriCAD network version allows users to use the same software in a LAN (Local area network) at the same time.

It would have 1 master dongle and several sub dongles. They are relations are as follows:

Version	Commerial version	Educational version
Nodes:	3 (sub)+1(master)	10(sub)+1(master)

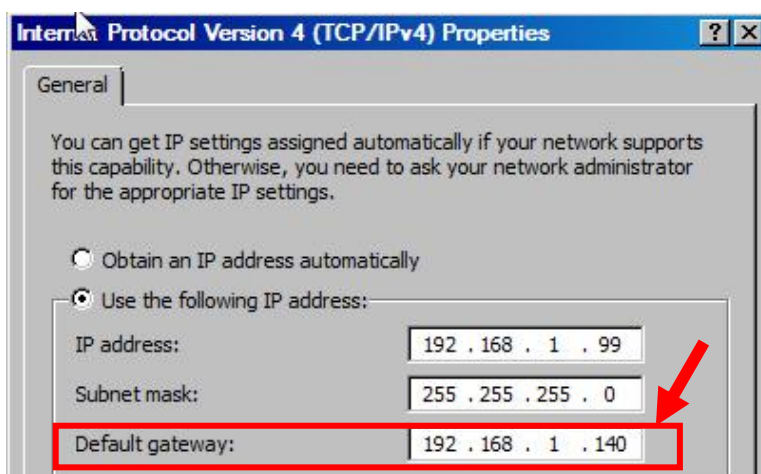
Note: The master dongle is always with the number of “xxx001xx”.


2. How to set the network version?


There are several steps to make sure it works ok:

- a. Install InteriCAD Program in the computer. **Make sure that all the computers have Local Area Network connection (same IP zone).**

Showed as the picture` below:



- b. You need to install dongle driver  (in the installation disk) independently in the server computer if you don't install InterCAD software on it.

- c. Copy the netserver.exe  file (in the installation disk) to the server computer. Run the Neterver.exe file (If you are using Windows Vista, make sure that you run it as administrator) and insert the master dongle (**with number xxx001xx**) to the server computer (it is suggested directly connecting to the USB port of motherboard). If all the settings are correct, you will be able to see the dialog as below:



- d. After the master dongle is set, we will go to the Sub-computers. For the Sub-computers, you need to insert the dongle and the relative authorization codes on them.

Normally, network version will be ready when you finish the above settings.

3. What to do if it doesn't work?

Here are some steps to help you find the problem:

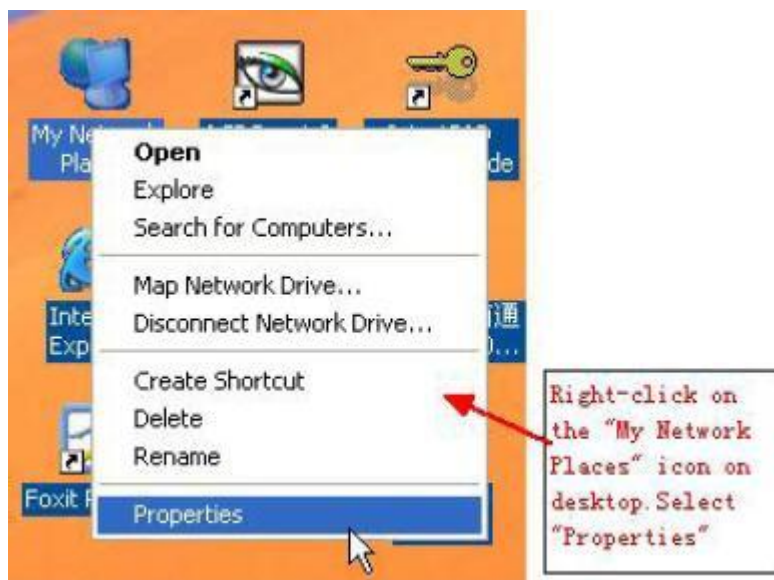
Normally, when met this problem, we need to check the network properties, like same IP zone, PC connection, open netserver.exe or not. But sometimes, all things is right, still cannot find server key in intranet.

Now, we check out another reason is: firewall. When you are in windows XP with SP2, you maybe meet this problem. For this, we need to modify some setting of network properties.

PROCESS:

Step 1 Open the network properties setting

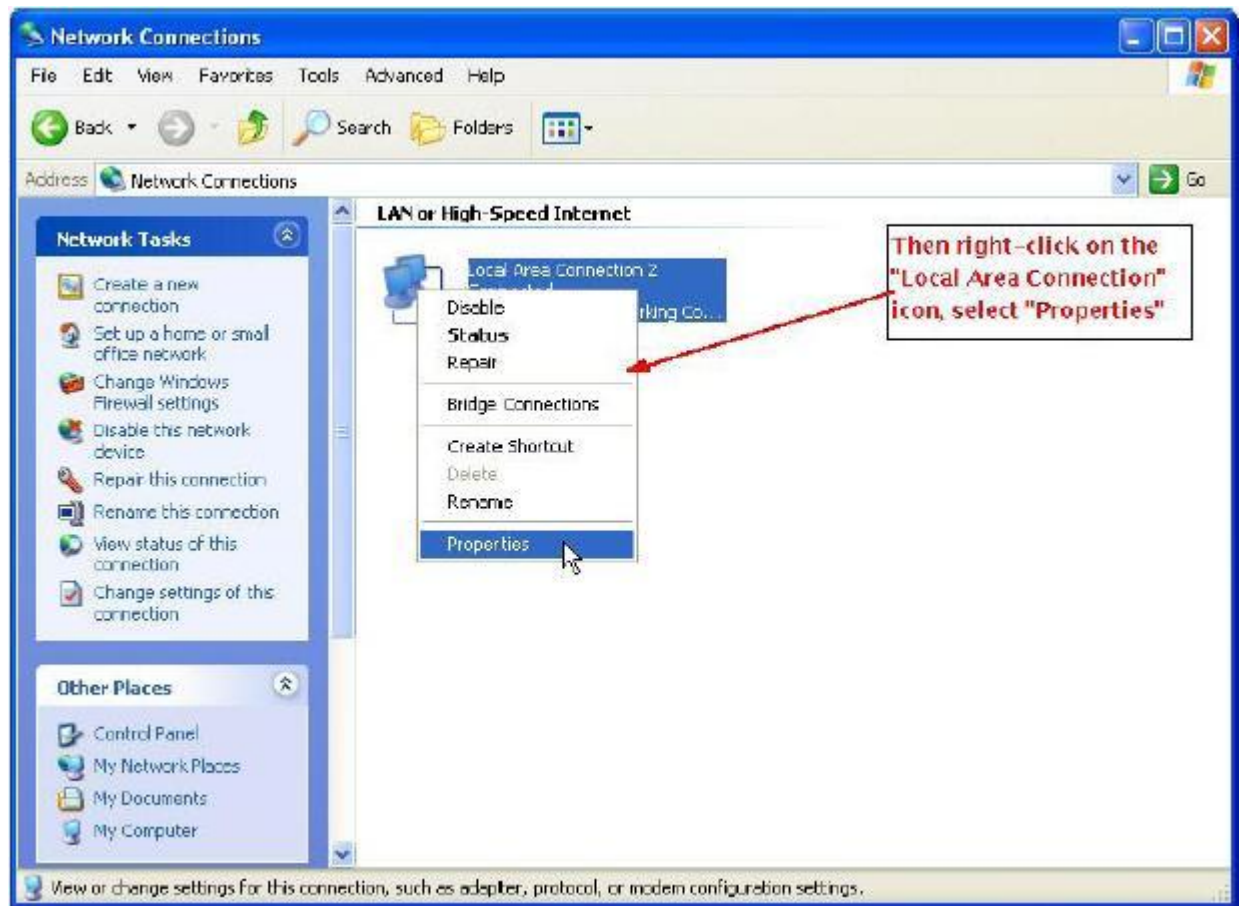
you can double click "My Network Places" on desktop or open it in "Control Panel".





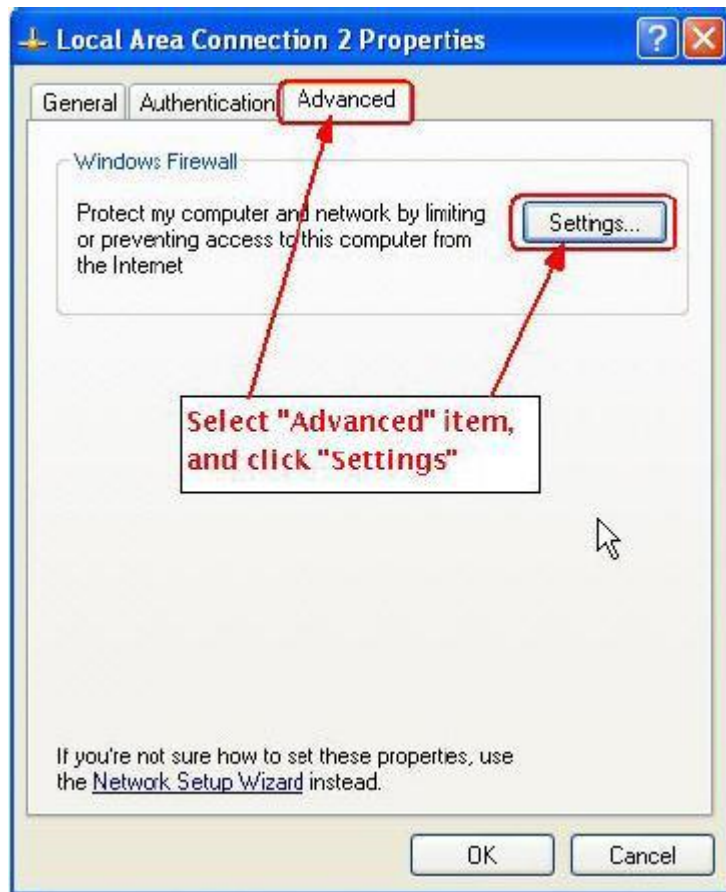
Step 2 Open "Local Network" Properties.

Right click "Local Area Connection" as below picture:



Step 3 Modify the settings

Select "Advanced" item and click "Settings".



Follow the instructions shown belows:

1. Mgx16.arx has different name in different versions of AutoCAD. Mgx16.arx is for AutoCAD2004,2005, 2006. Mgx15.arx is for AutoCAD 2000, 2002. Mgx14.arx is for AutoCAD 14.

